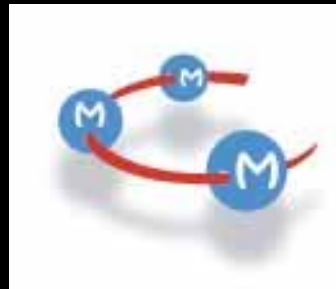
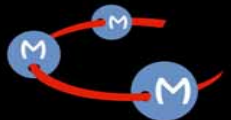


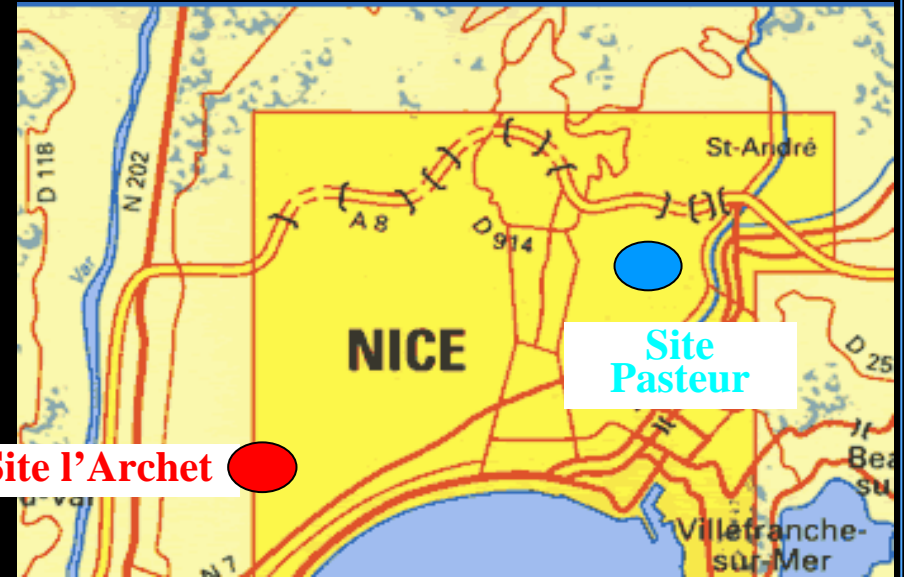
Mediterranean Research Center for Molecular Medicine (C3M) INSERM/UNSA U895



Director: Yannick LE MARCHAND-BRUSTEL
Scientific Deputy Director :
Patrick AUBERGER



The Medical School and University Hospital of Nice - Two sites



L'Archet

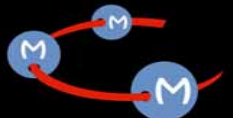
Pasteur

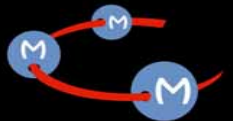
U576

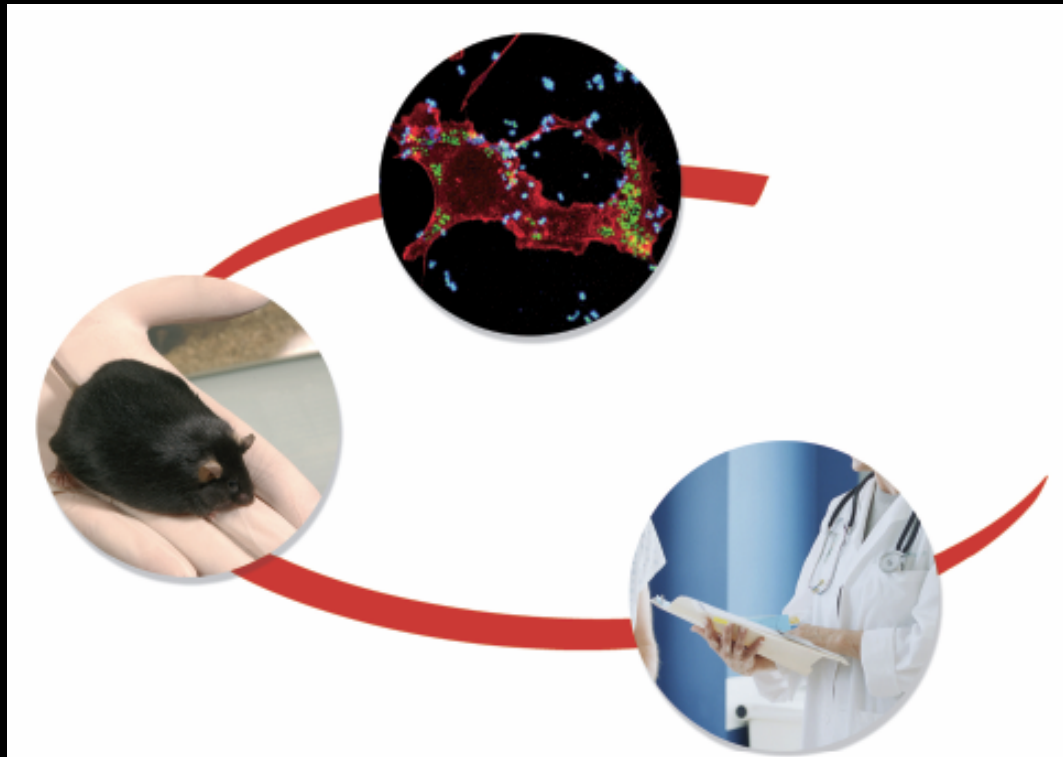
C3M

IFR 50

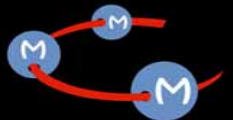
**INSERM and
CNRS Units**







- A multidisciplinary research center integrated in the development of the Nice University Hospital:
From bench to bedside

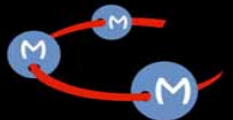


OUR OBJECTIVES

To perform a high level of **multidisciplinary fundamental research** together with a **strong interaction with the clinicians** on three major health problems: **cancers, nosocomial infections, obesity/diabetes**

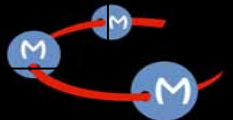
To allow for **better therapeutic strategies**

To create the conditions which permit for **synergistic effects** between fundamental scientists of different disciplines and with clinicians.



Scientific project: Three major topics

- I : Proliferation, cellular deaths, differentiation, and cancer
- II : Biology of host/microorganisms interactions
- III : Metabolic diseases



Topic I: Proliferation, cellular deaths, differentiation, and Cancer

TEAM 1 R Ballotti:
Biology and pathology of
melanocytes: from cutaneous
pigmentation to melanomas



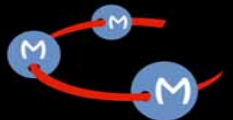
TEAM 4 JF Peyron:
Inflammation, Cancer and
cancer stem cells

TEAM 2 P Auberger
Cell death, differentiation
and cancer

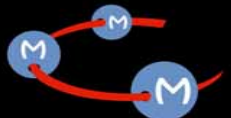
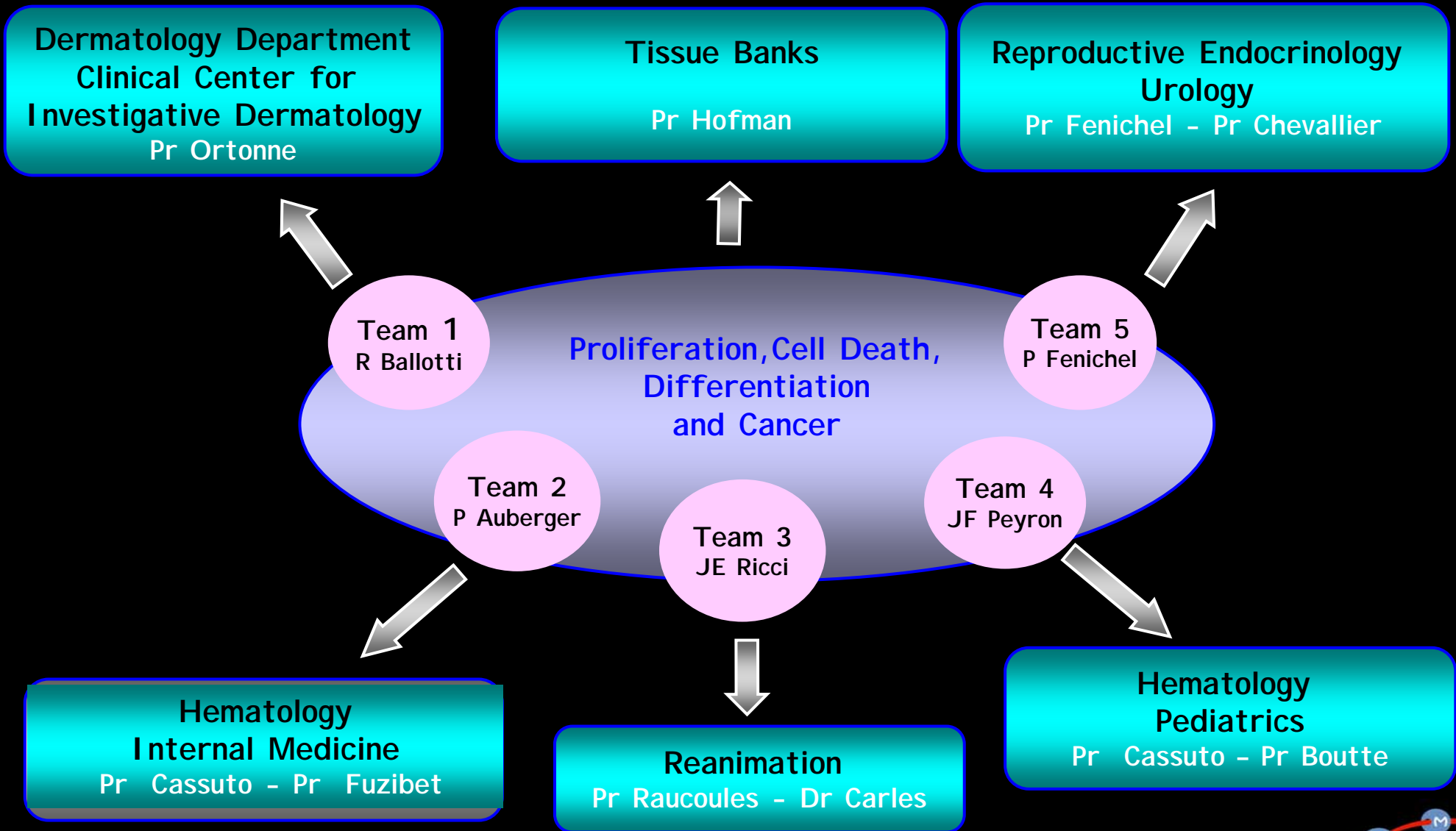


TEAM 5 P Fénichel
Physiopathological aspects
of germ cell proliferation:
genomic and non genomic
effects

TEAM 3 « AVENIR 2006 » JE Ricci
Regulation of caspase-
dependent and -independent cell
death

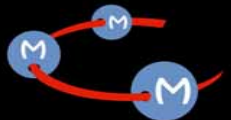


Topic I : Clinical Partnerships

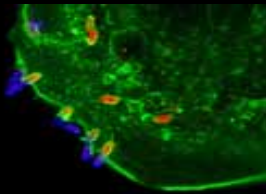


Topic II: Biology of host/microorganisms interactions

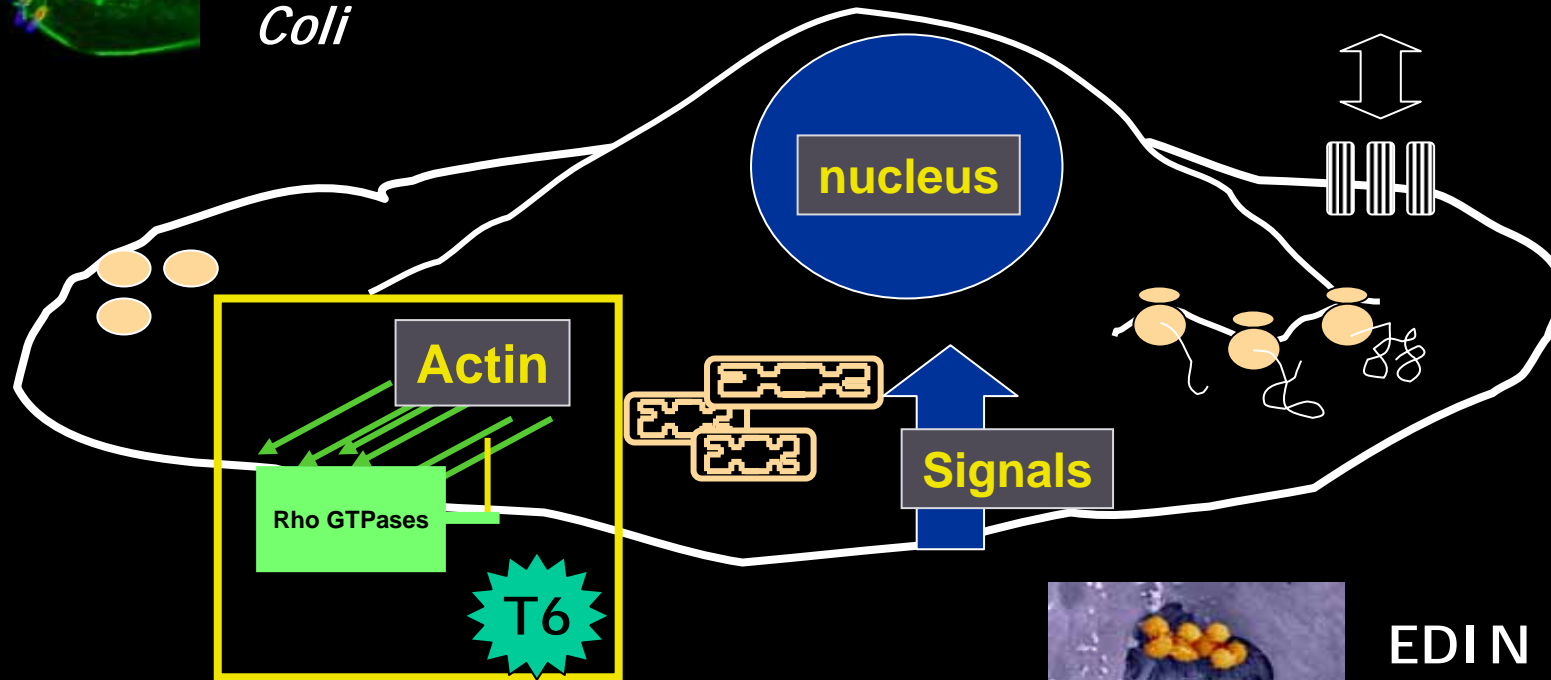
TEAM 6 E Lemichez:
Microbial toxins in Host
Pathogen interaction



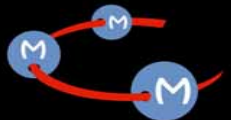
Bacterial toxins with an intracellular effect act at different levels



CNF1 toxin
Uropathogenic *E. Coli*



EDIN toxins
S. aureus



Topic II : Clinical Partnerships

Department of Bacteriology

Dr Landraud

Department of virology

Pr Giordanengo

Department of parasitology

Pr Marty

Biology of the host/microorganisms
interactions

Team 6
E Lemichez



Topic III: Metabolic diseases

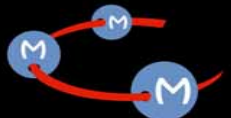
TEAM 7 JF Tanti-M Cormont:
Cellular and molecular
physiopathology of obesity
and diabetes



TEAM 8 A Tran-P Gual:
Hepatic complications in obesity
(NAFLD)



TEAM 9 "AVENIR 2007 "
R Govers:
Glucose transporters and Diabetes



Obesity is a major health problem: An increased risk of mortality and comorbidities

Psychological and societal problems

Non insulin
dependent
diabetes

Metabolic syndrome

Cancers



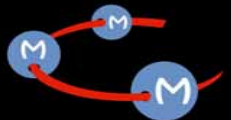
Hepatic
pathologies
(NAFLD)

Articulations problems

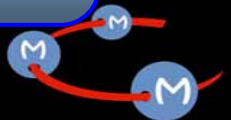
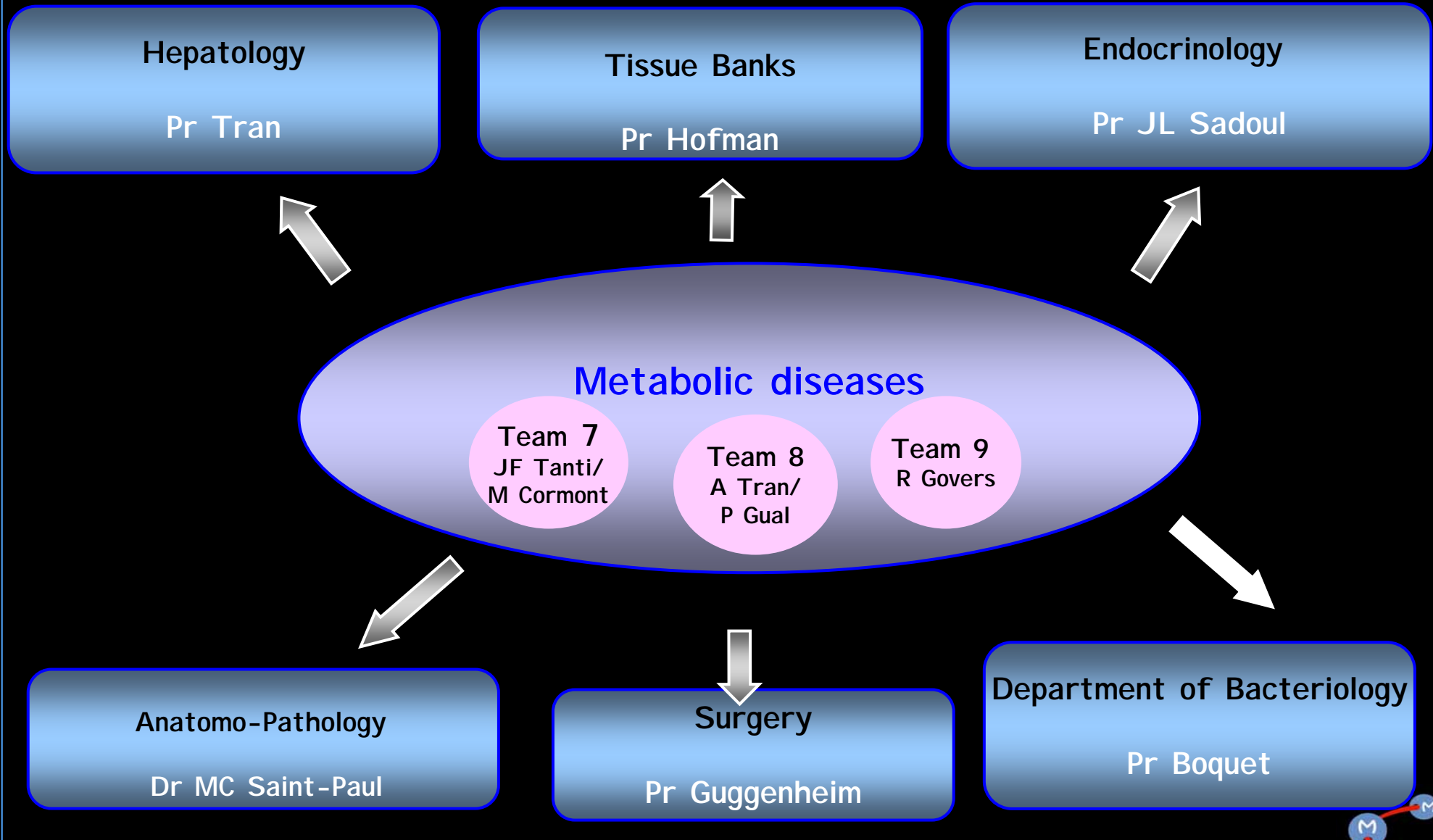
Respiratory problems

Cardiovascular problems

Heart attacks



Topic III : Clinical Partnerships



How to contact us

My phone number; 04 92 06 42 22

My email: lemarcha@unice.fr

our web site: www.unice.fr/c3m/

